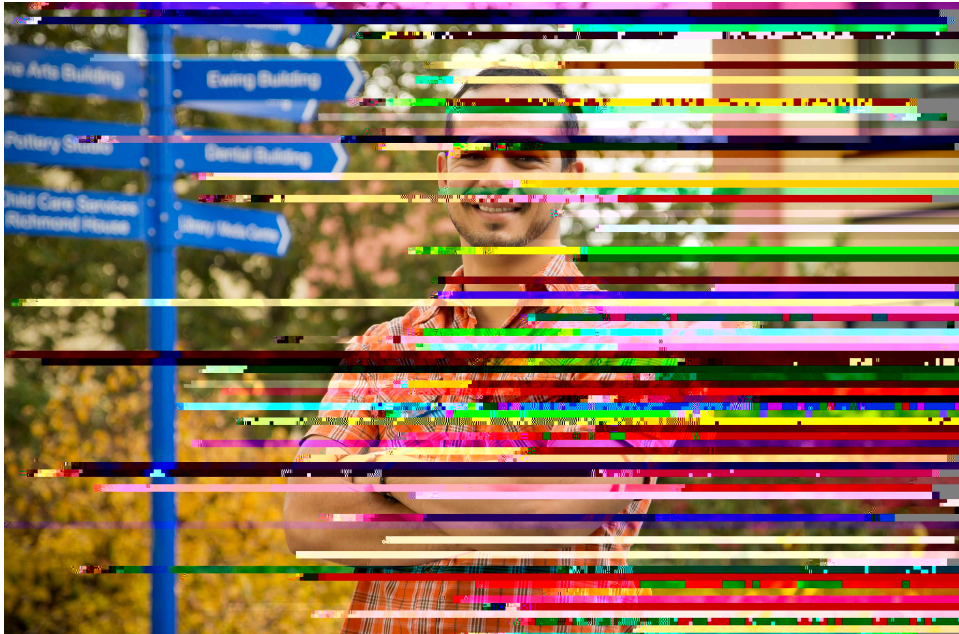
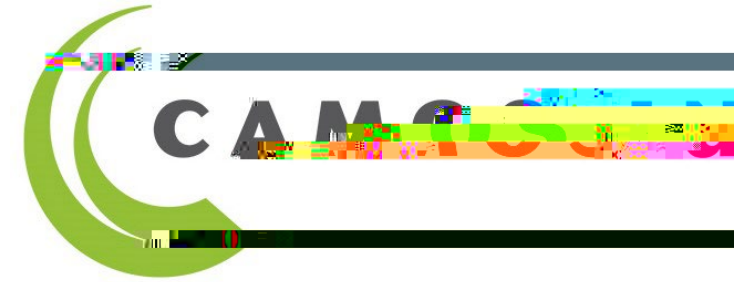


# English Language Development (ELD)



"Camosun

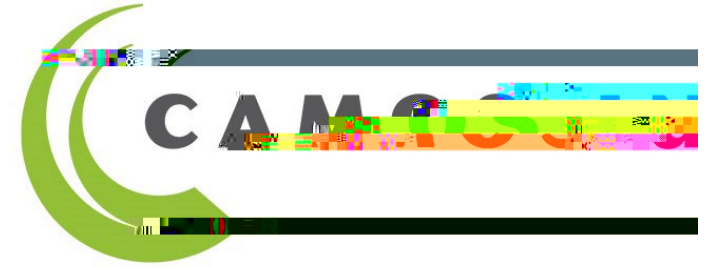
# English Language Development (ELD)



## About our programs

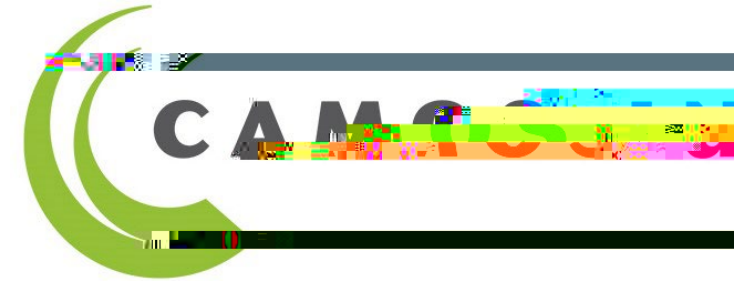
- Levels & Courses
- Start dates & schedules
- Locations
- Costs
- Extra help
- Other stuff at Camosun
-

# English Language Development (ELD)



## Levels and Courses

# English Language Development (ELD)



## Flexible Schedules

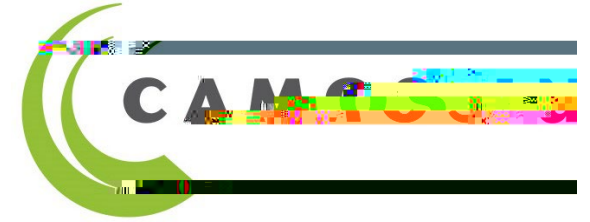
### BESL level courses (ELD 01 – 05):

- Start in September, January, and May
- 15-week courses
- Choose:
  - part-time (10 hours per week)
  - full-time (20 hours per week)
- Morning / afternoon / online evening courses may be available

Author: Mark Brannan CC BY-NC-SA 2.0



# English Language Development (ELD)



## Benefits of 7-week Courses

More start dates during the year  
More flexibility for students  
Complete a course in 7 weeks  
Intensive focus on one course at a time

*\*15-week courses also available*

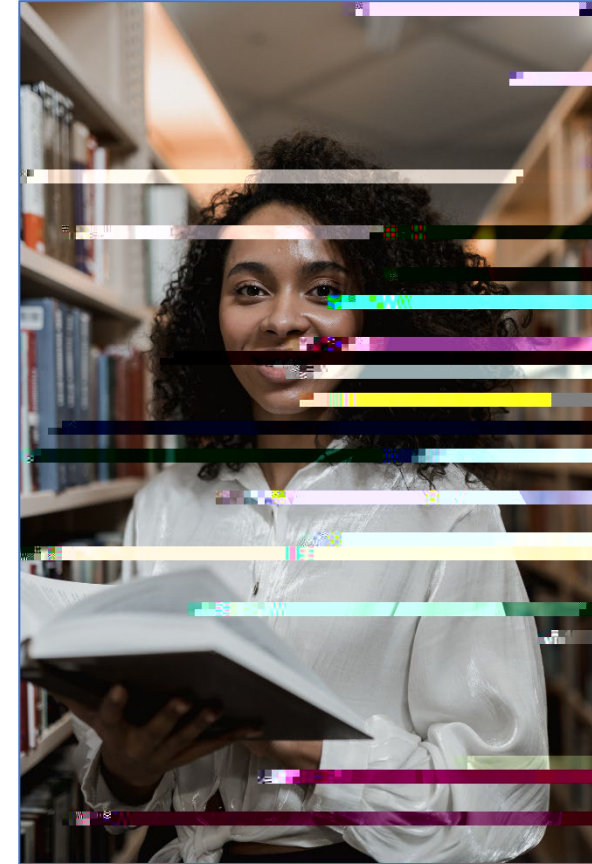
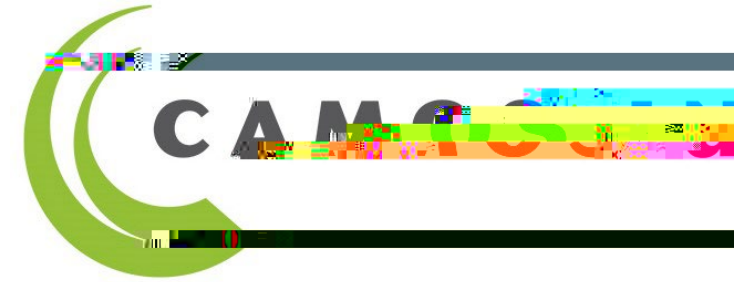


Photo by Tima Miroshnichenko for Pexels

# English Language Development (ELD)



## Locations

- Interurban Campus (levels 1-5)
- Lansdowne Campus (levels 6-7-9)

BC Transit buses go to both campuses

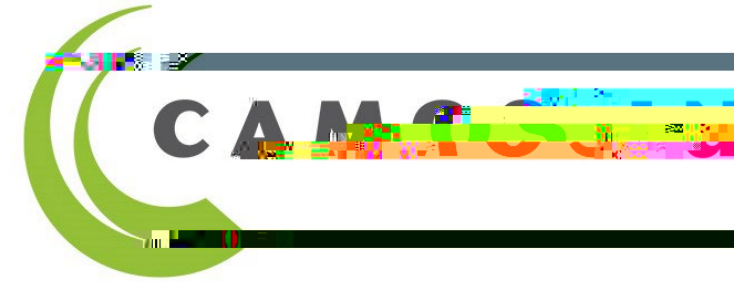
# English Language Development (ELD)

## Costs

- Tuition-free for Canadian citizens, permanent residents, and protected persons
- Some students can apply for the Adult Upgrading Grant (AUG) to cover textbooks and student fees
- International students: visit



# English Language Development (ELD)



## Extra Help

- The ELD Help Centres provide tutoring appointments, books and resources, computers and more.
- ELD Instructional Assistants (IAs) are in the Help Centres and happy to assist



Author: Skakerman CC BY 2.0

# English Language Development (ELD)

# English Language Development (ELD)

## How Do I Get Started?

*Contact Camosun*